

Figure 5-source data 2
Figure 5E

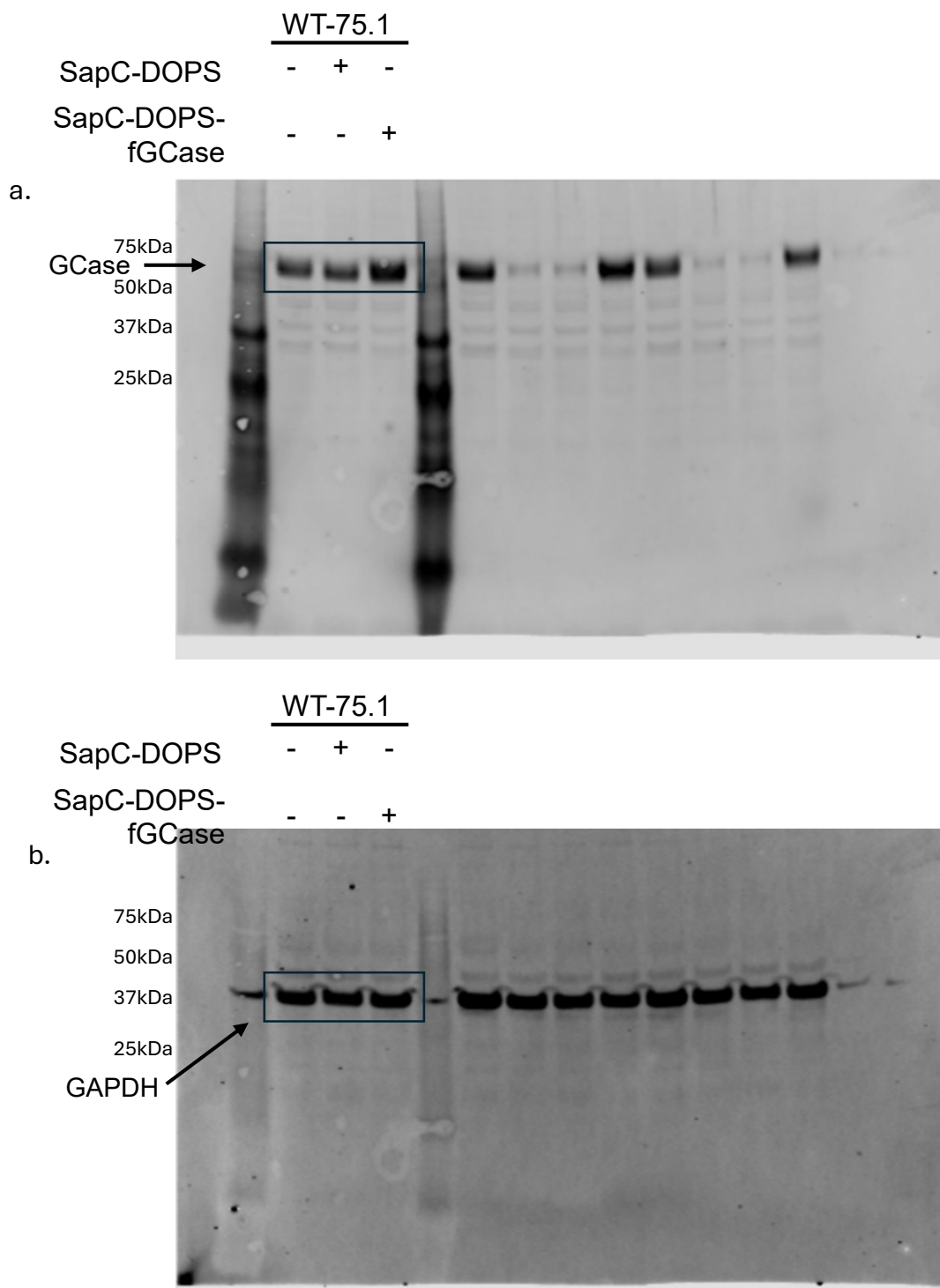


Figure 5-Source Data 2_5E. Original membranes corresponding to Figure 5, panel E.
 Original blots for Gcase (panel a) and loading control GAPDH (panel b). Precision Plus Protein Dual Color Standards were used. Other lanes are not shown in Figure 5E.

Figure 5-source data 2
Figure 5F

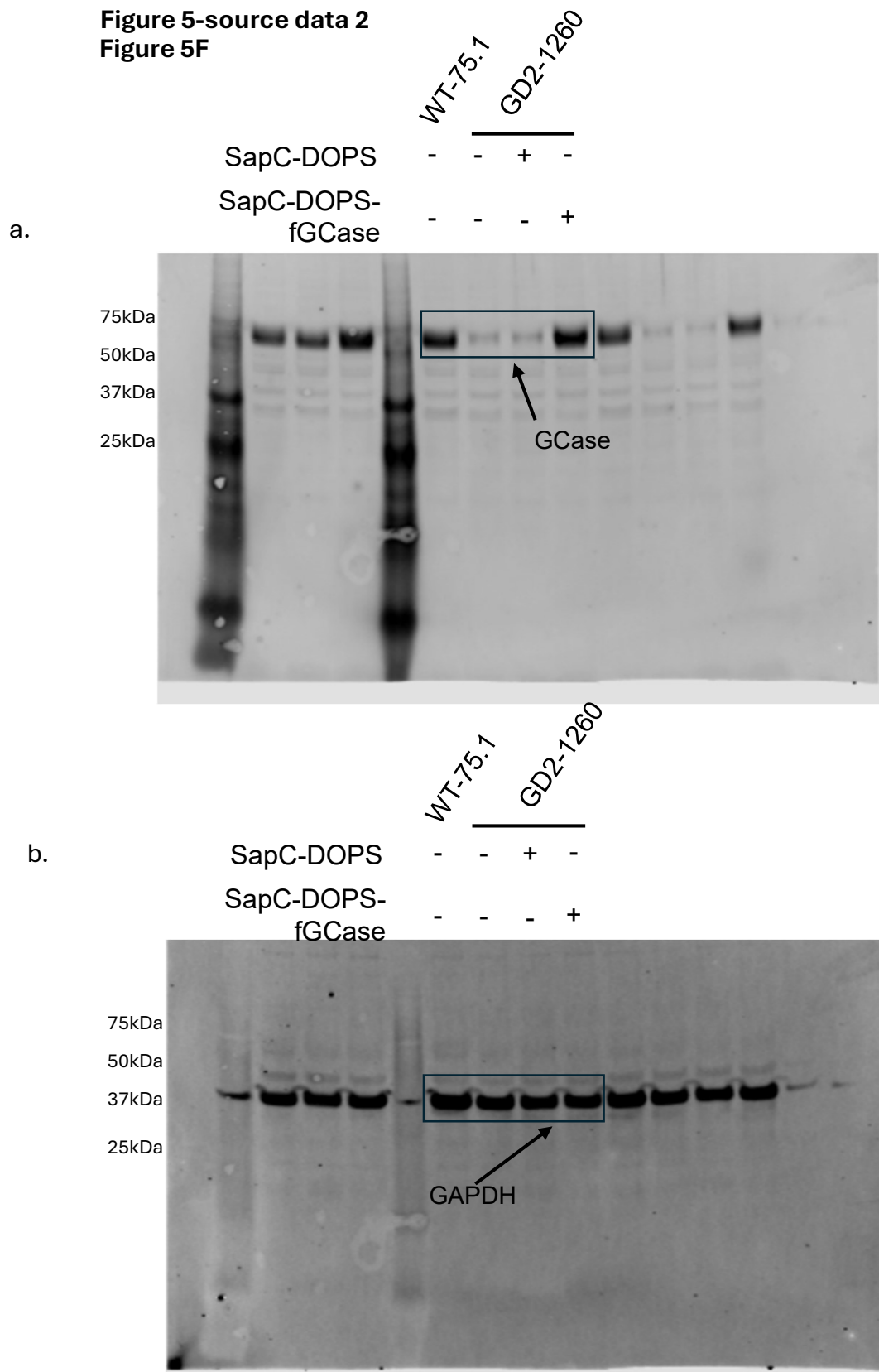


Figure 5-Source Data 2_5F. Original membranes corresponding to Figure 5, panel F.
Original blots for GCase and loading control GAPDH. Precision Plus Protein Dual Color Standards were used. Other lanes are not shown in Figure 5F.

Figure 5-source data 2
Figure 5G

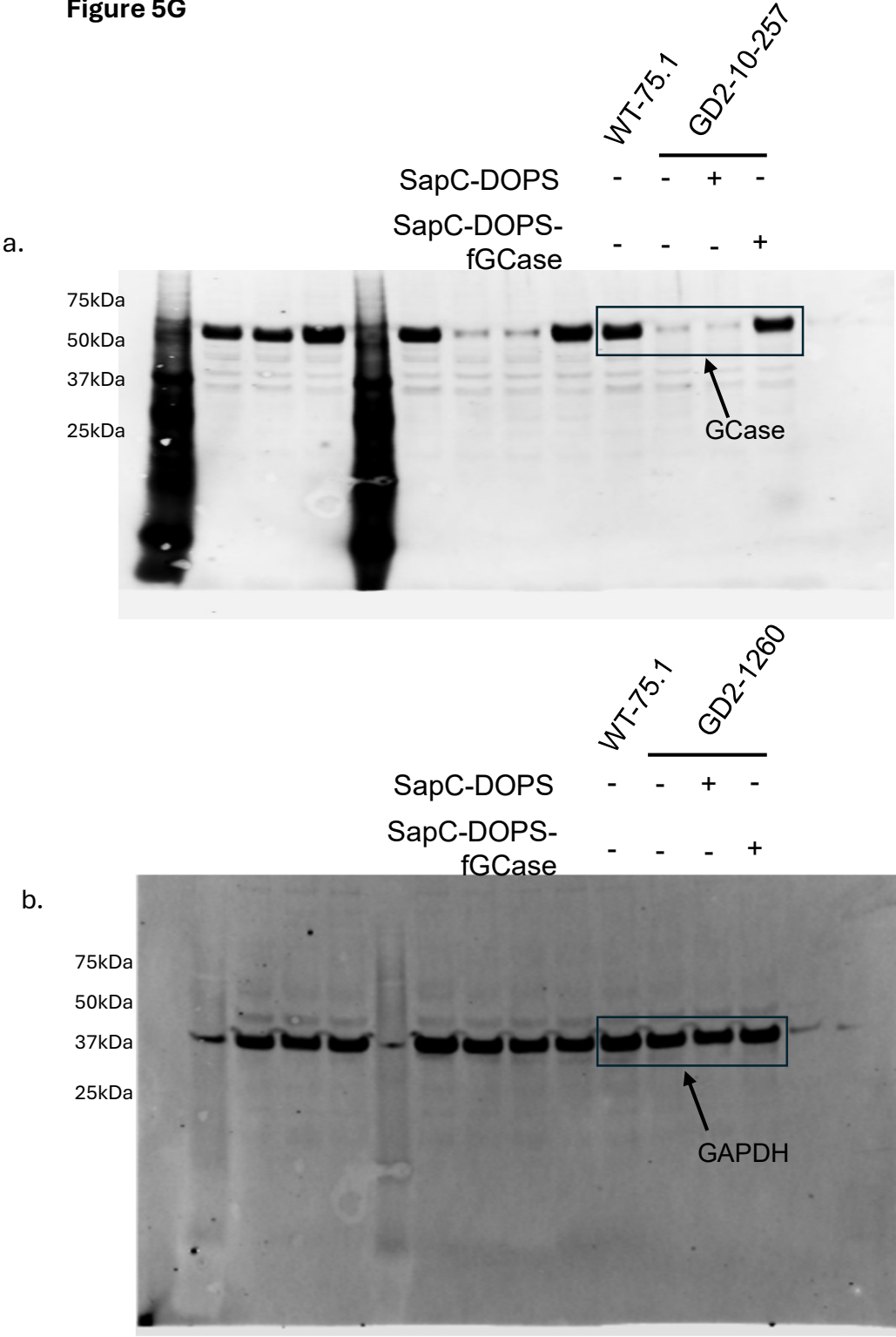


Figure 5-Source Data 2_5G. Original membranes corresponding to Figure 5, panel G. Original blots for GCCase and loading control GAPDH. Precision Plus Protein Dual Color Standards were used. Other lanes are not shown in Figure 5G.

Figure 5-source data 2
Figure 5J

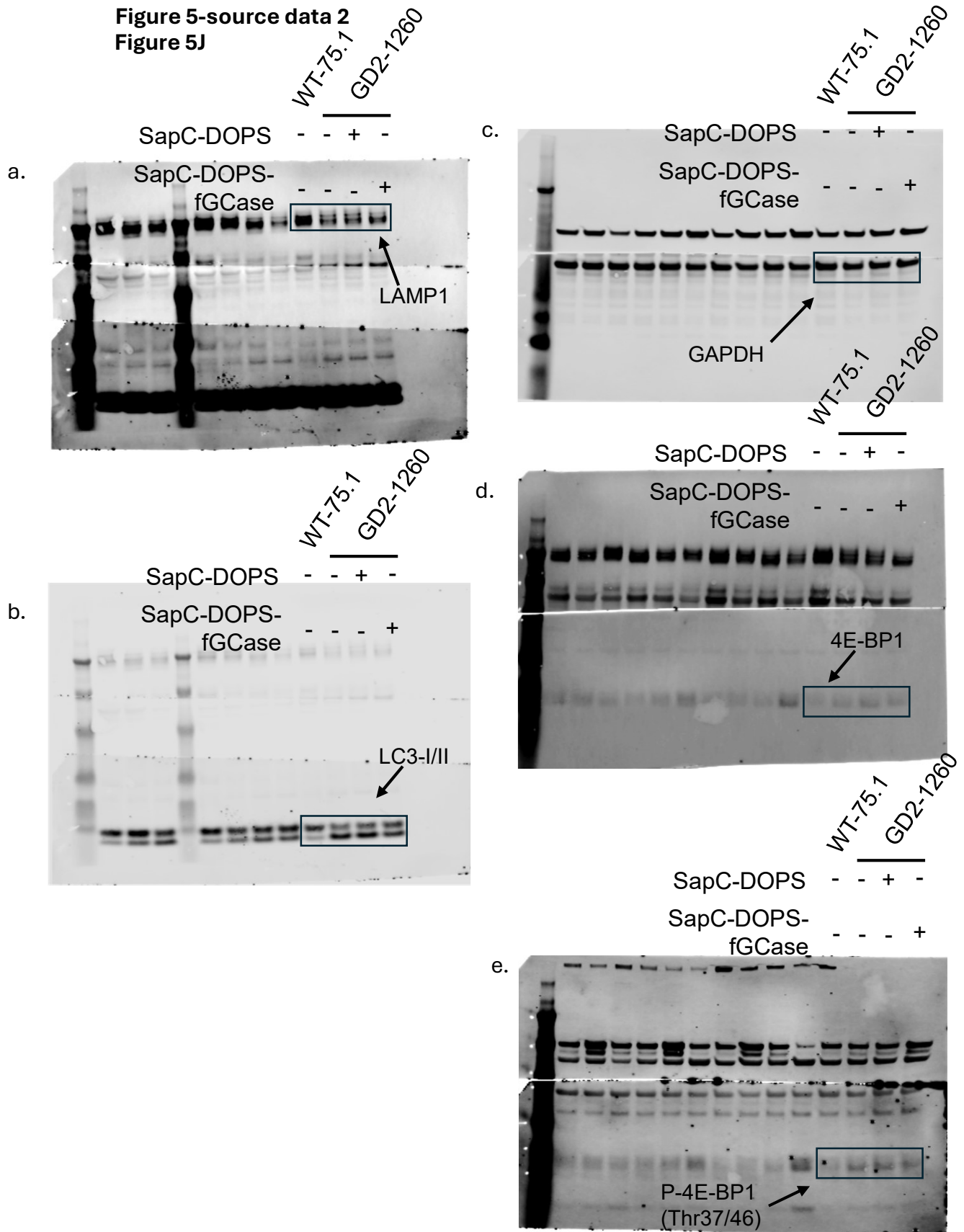


Figure 5-Source Data 2_5J. Original membranes corresponding to Figure 5, panel J.
Original blots for LAMP1 (panel a), LC3-I/II (panel b), 4E-bp1 (panel d), P-4E-BP1 (Thr37/46) (panel e), and loading control GAPDH (panel c). Precision Plus Protein Dual Color Standards were used. Other lanes and targets blotted in these membranes are not shown in Figure 5J.